



Silicon Integrated Systems Corp.

SiS Touch Utility User Guide For Image Style GUI

Version 1.2

2024/09/27



Revision History

Version	Date	Commit	Author
V1.0	2024/08/28	Initial Version	Jason Wang Vincent Ting
V1.1	2024/09/20	Update for Utility V5.3.8	Jason Wang Vincent Ting
V1.2	2024/09/27	Description of Adding the Main Touch / Sub Touch Identification Label Feature	Jason Wang Vincent Ting

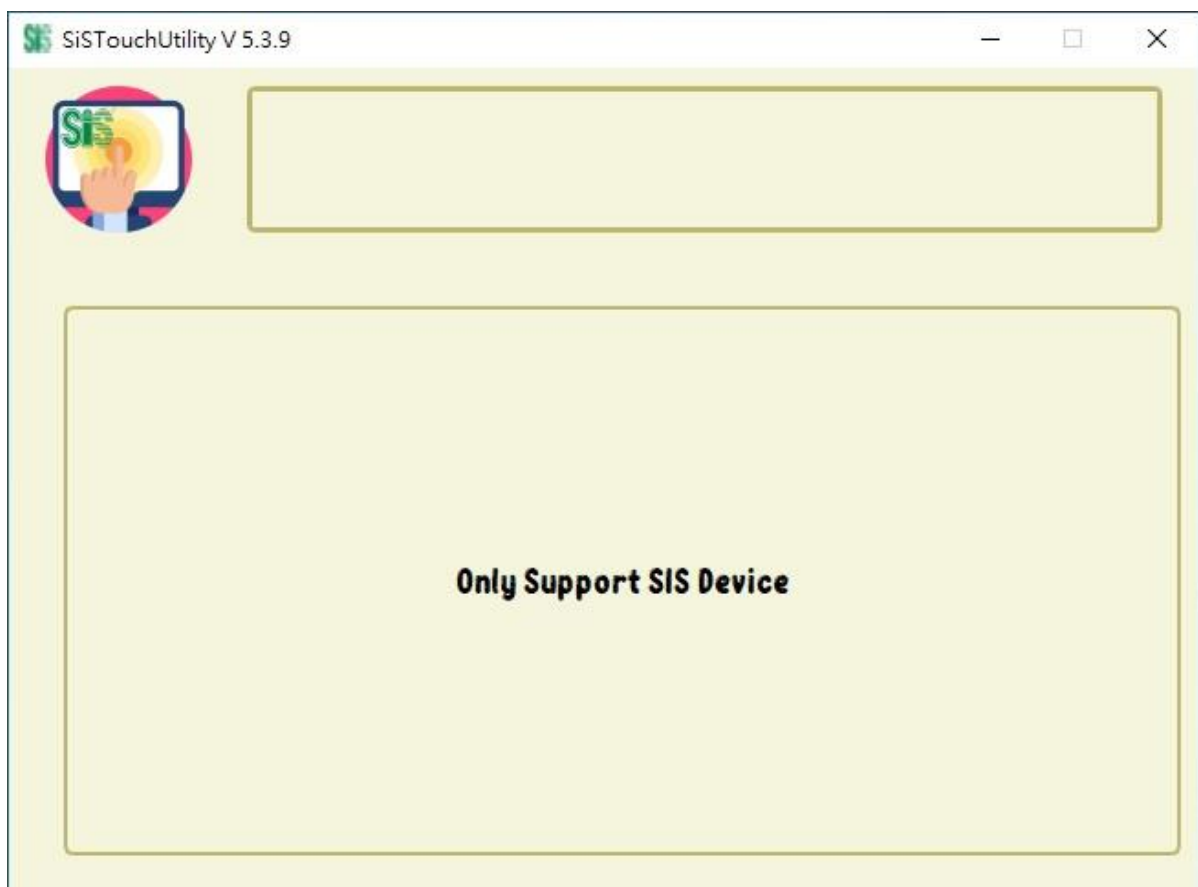


Contents

Revision History	1
Contents	2
1. Introduction	3
2. Supported Hardware and Operating Systems	3
3. Features and Operation Methods	4
Fundamental Page Functionality	5
Sound Page Functionality	6
Mapping Page Functionality	10
Detail Page Functionality	15
FW Update Functionality	18
Legal Disclaimer	23

1. Introduction

SiS Touch Utility is an application independently developed by Silicon Integrated Systems (SiS), designed exclusively for use with SiS Touch ICs. It facilitates basic touch functionality mode switching, sound adjustments, and supports dual-screen touch calibration. Installing the SiS Touch Utility is simple and does not require an additional driver installation.

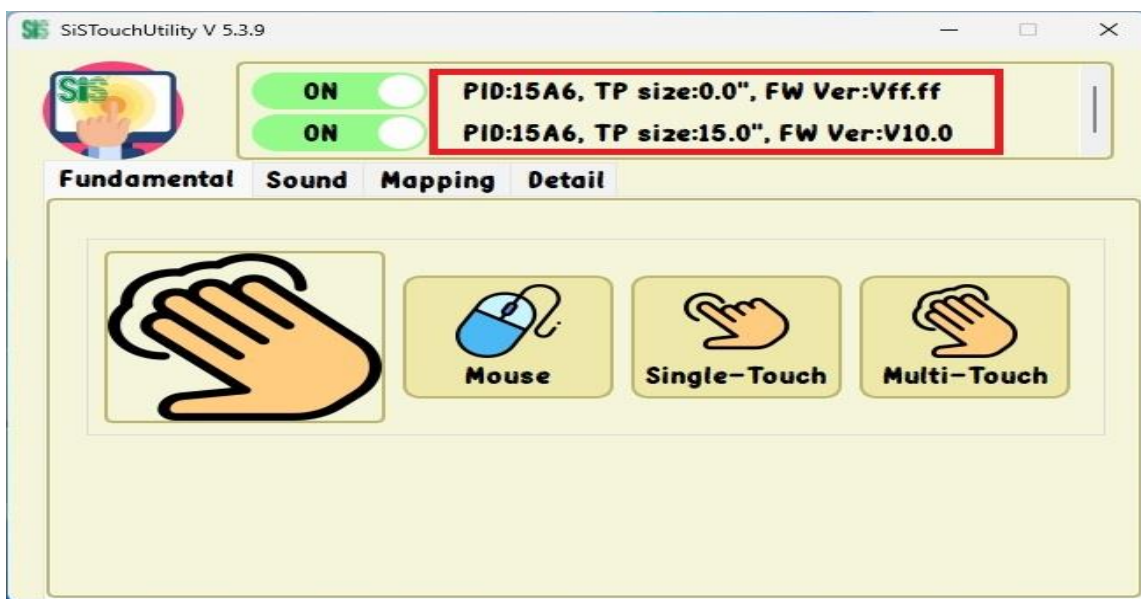


2. Supported Hardware and Operating Systems

- (i) Only compatible with SiS Touch ICs in the SiS95xx series.
- (ii) Applicable for systems with either a single-touch or dual-touch device.
- (iii) Supports operation on Windows 10 / Windows 11 operating systems only.

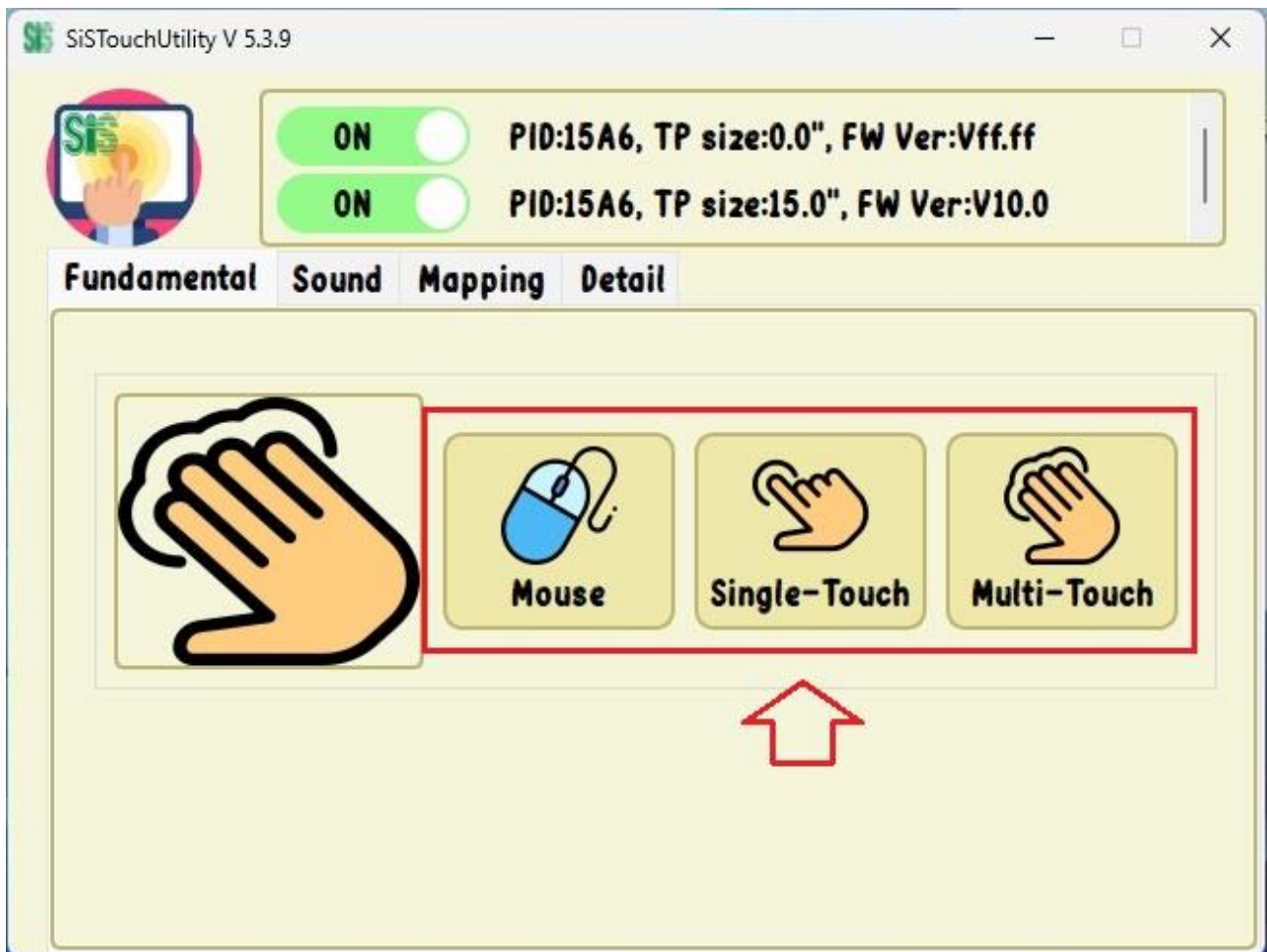
3. Features and Operation Methods

Based on the functions, the description is divided into the following five sections. The detected SiS device information will be displayed in the box at the top of the main screen. Currently, up to two SiS devices are supported. Upon detection, the PID/TP size/FW version will be shown. Additionally, you can toggle the Touch reporting on or off by clicking the white dot on the red arrow.



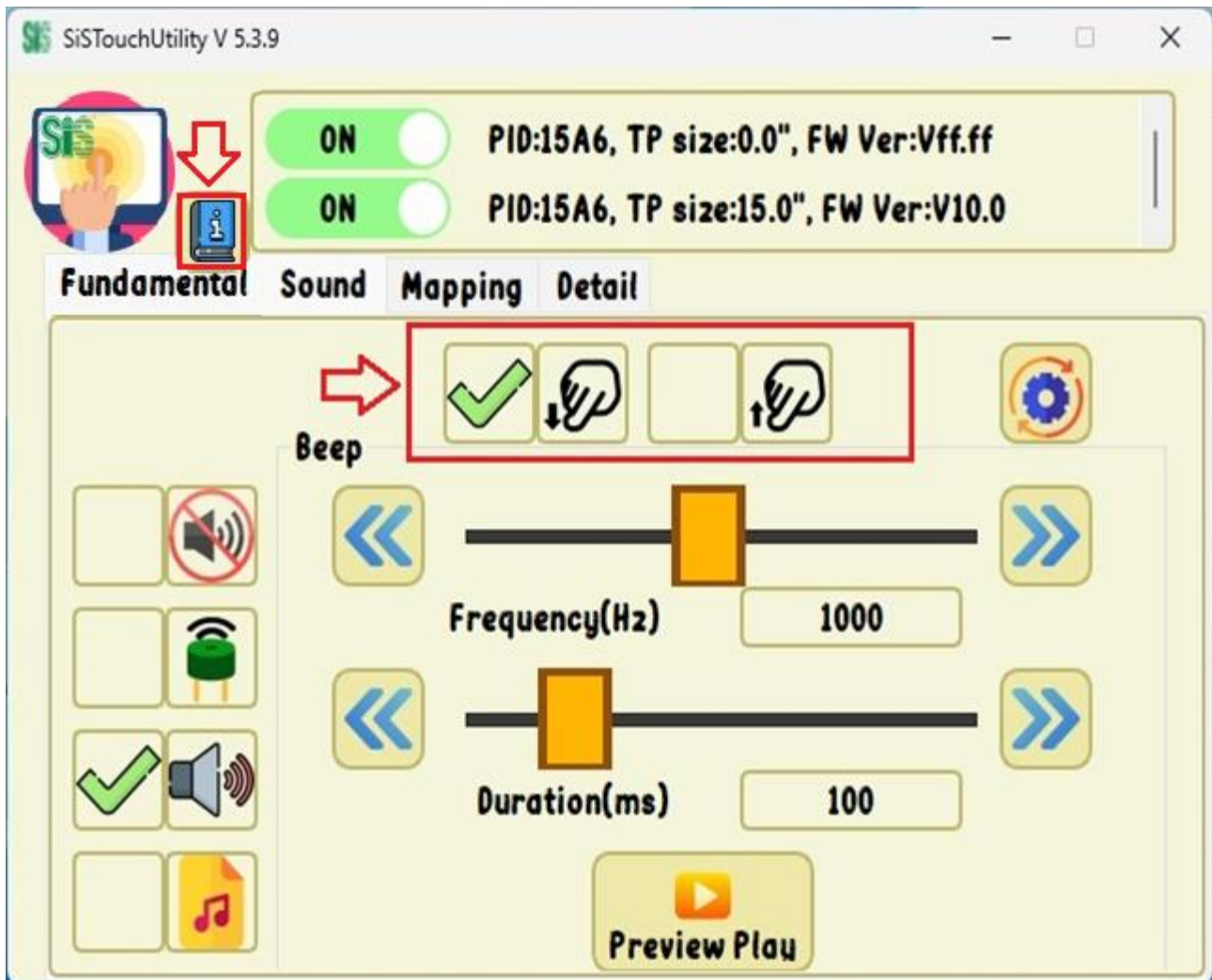
Fundamental Page Functionality

The Fundamental page supports three touch modes: Mouse, Single Touch, and Multi-Touch. You can switch between them by directly clicking the corresponding icons on the screen.



Sound Page Functionality

- (1) The icons within the red box on the screen indicate the options for selecting under which touch conditions a sound will be emitted.



Clicking this icon will open the User Guide.

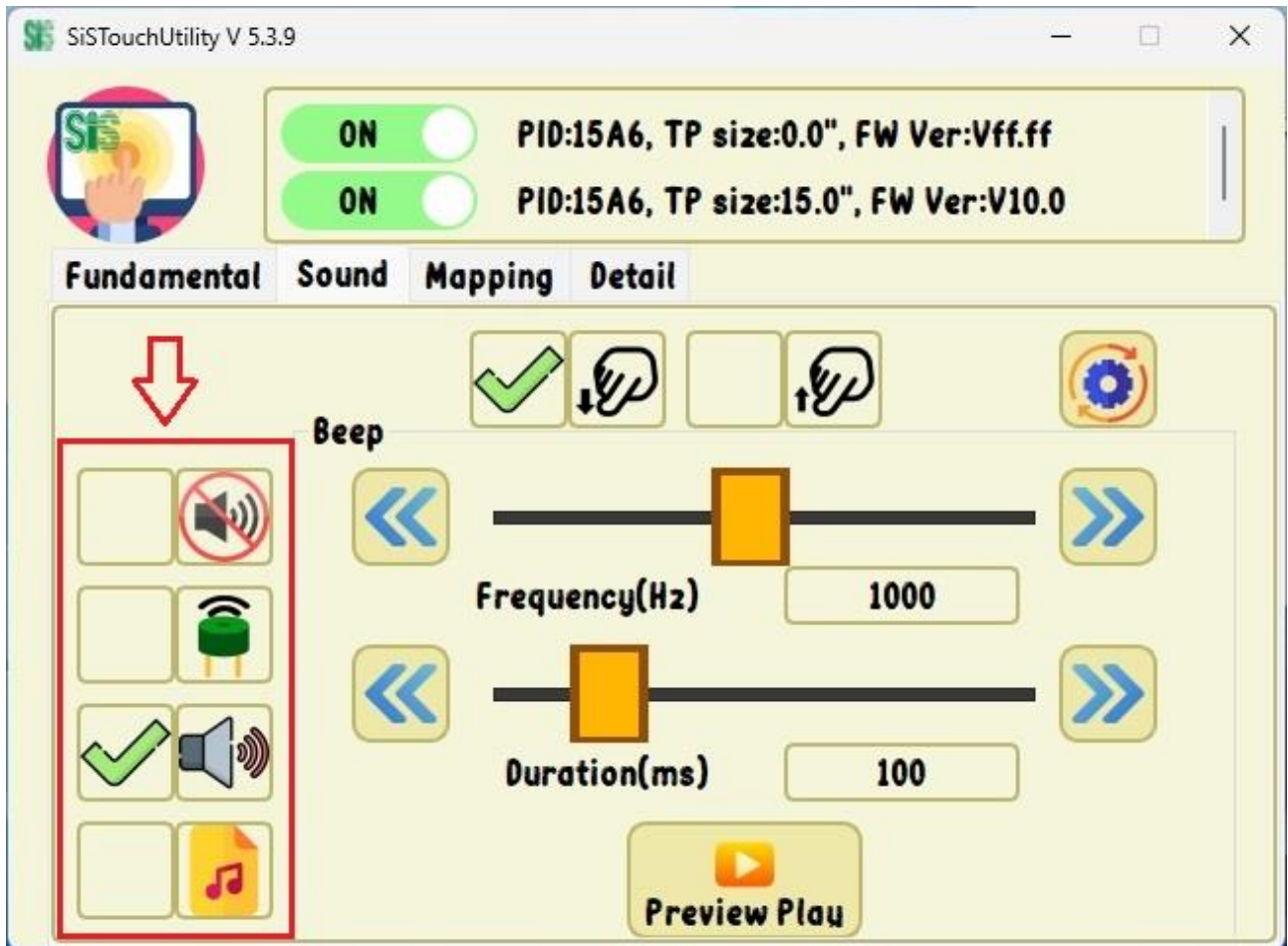


Selecting this option indicates that a sound will be emitted when a finger is pressed down.



Selecting this option indicates that a sound will be emitted when a finger is lifted.

- (2) On the left side, you can select the sound mode: Mute, Speaker Sound, or Custom Sound Effect.



Disable: Mutes the system, no sound is emitted.




Buzzer: Emits sound through the buzzer.



Beep: Emits sound through the speaker.



Audio: Emits customized sound effects.

- (3) When the icon is clicked...  The function restores all settings to their default configuration.

(4) In the speaker sound display status, you can freely select the frequency and sound duration. You can press the "Preview Play" button to play the sound effect.

“ Frequency (Hz) ” adjusts the audio frequency range, adjustable from 100 to 2000 Hz. The slider bar step is 20 Hz, and the button step is 20 Hz per click.

“ Duration (ms) ” sets the duration of the audio output, adjustable from 0 to 500 ms. The slider bar step is 20 ms, and the button step is 5 ms per click.



- (5) In the custom sound effect display status, you can choose from the predefined sound effects. The SiS Touch Utility includes five built-in sound effect files for selection. You can press the "Preview Play" button to play the sound effect.



Mapping Page Functionality

- (1) The Mapping page is for the functional settings of Touch and Mouse, as well as the detection settings for the Main/Sub screens.



Note: To activate the Main Touch identification label feature, you must first perform "Touch Mapping" and "Mouse Mapping."



This icon indicates the device location of the system's main screen (Main Touch)!

(2) Touch Mapping Setup Instructions:

1. Click "Touch Mapping" to begin the configuration of dual-screen Touch Mapping settings.
2. During the Touch Mapping process, the following message will appear in the center of the main screen. Please click once on the screen. If you wish to abandon the mapping operation, you can press the "ESC" key on the keyboard to exit the mapping settings (the sub-screen will be blank at this time).



Tap this screen with a single finger to identify it as the touchscreen.

If this is not the Tablet PC screen, press Enter to move to the next screen. To close the tool, press Esc.

3. After clicking, the following message will appear on the main screen. Please press the "Enter" key on the keyboard to continue to the next step.

Press Enter to proceed to the next step to complete your configuration

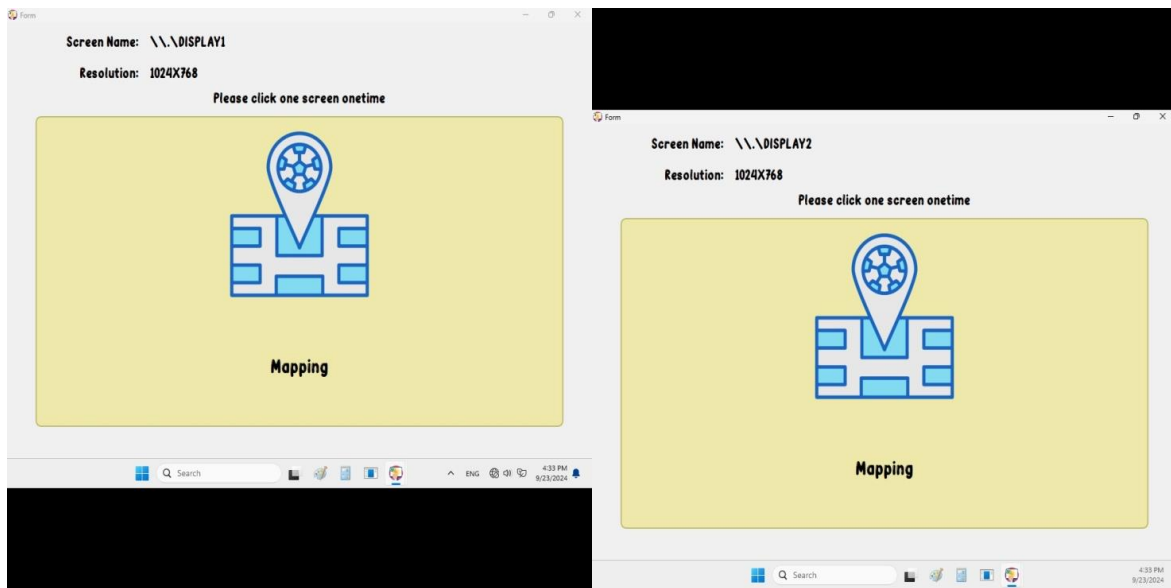
4. After pressing "Enter," please move to the secondary screen to perform operations. At this point, the secondary screen will display the following message (the main screen will be blank). Please click on the secondary screen. Once the click is completed, both the main and secondary screens will return to the Windows 11 desktop, indicating that the Touch Mapping setup is now complete.

Tap this screen with a single finger to identify it as the touchscreen.

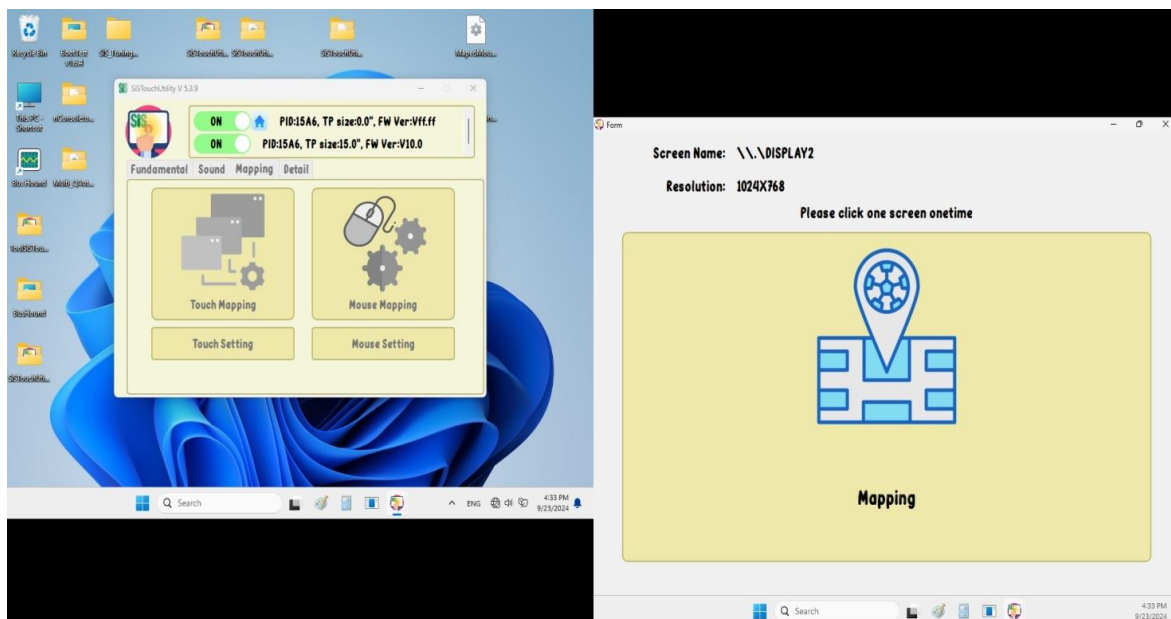
If this is not the Tablet PC screen, press Enter to move to the next screen. To close the tool, press Esc.

(3) Mouse Mapping Setup Instructions:

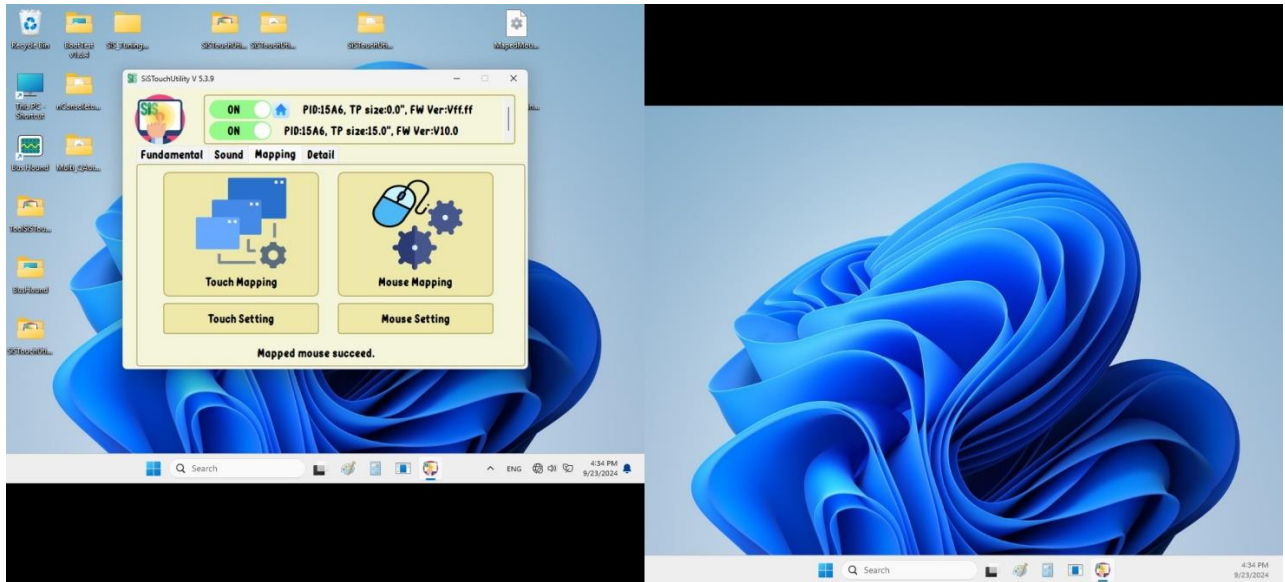
1. Click "Mouse Mapping," and you will see the following screens appear on the main and secondary displays (the left image is the main screen, and the right image is the secondary screen). Please click once on the main screen.



2. After clicking, the main screen will return to the Windows desktop, while the secondary screen will maintain its original display. At this point, clicking on the area within the secondary screen box will also return it to the Windows desktop, completing the setup.



3. Setup completed.



Note: Whenever the settings for the primary/secondary screens change or the number of connected screens increases or decreases, please re-run “Touch Mapping” and “Mouse Mapping”.

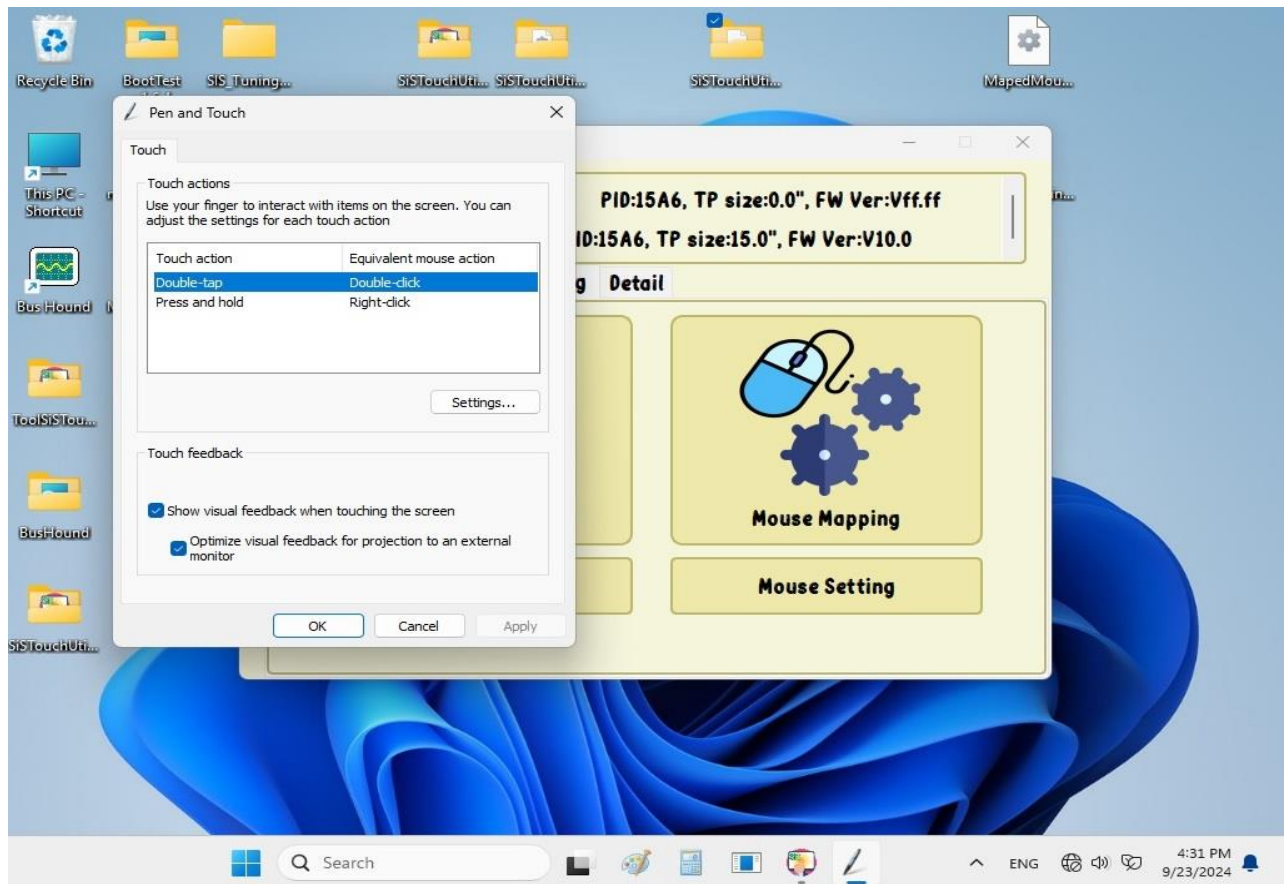
(4) Mouse Setting : Calls the operating system's Mouse settings menu.

Adjust settings as needed.



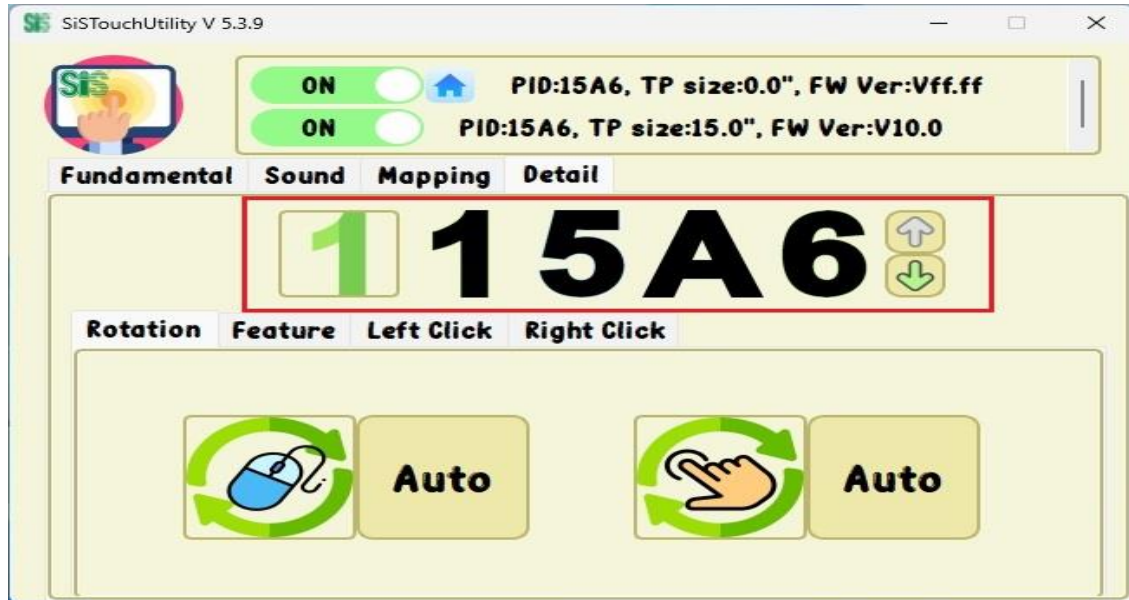
(5) Touch Setting: Calls the operating system's Touch settings menu.

Adjust settings as needed.



Detail Page Functionality

- (1) Use the up and down arrows within the red box to select the main and secondary screen touch panels.

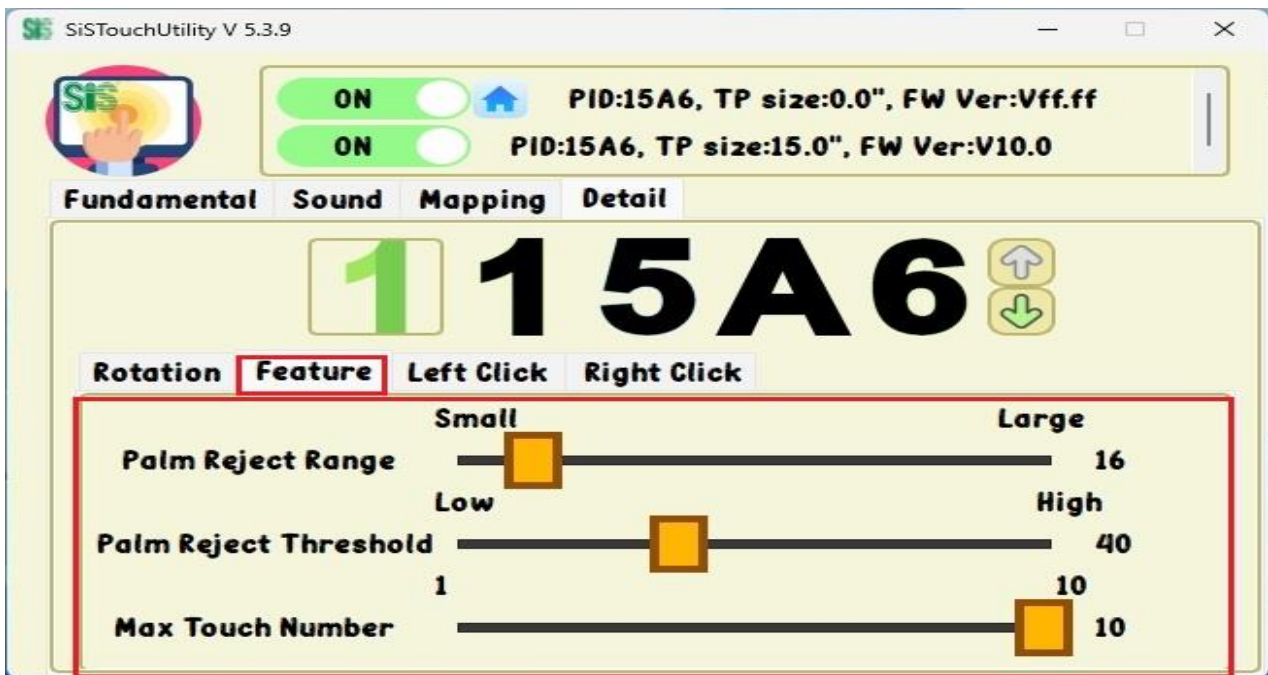


- (2) "Rotation": This function allows you to select the screen to be rotated and set its mouse or touch coordinates, with a range of 0 to 270 degrees. Generally, it is sufficient to set it to "Auto"!



(3) “Feature”:

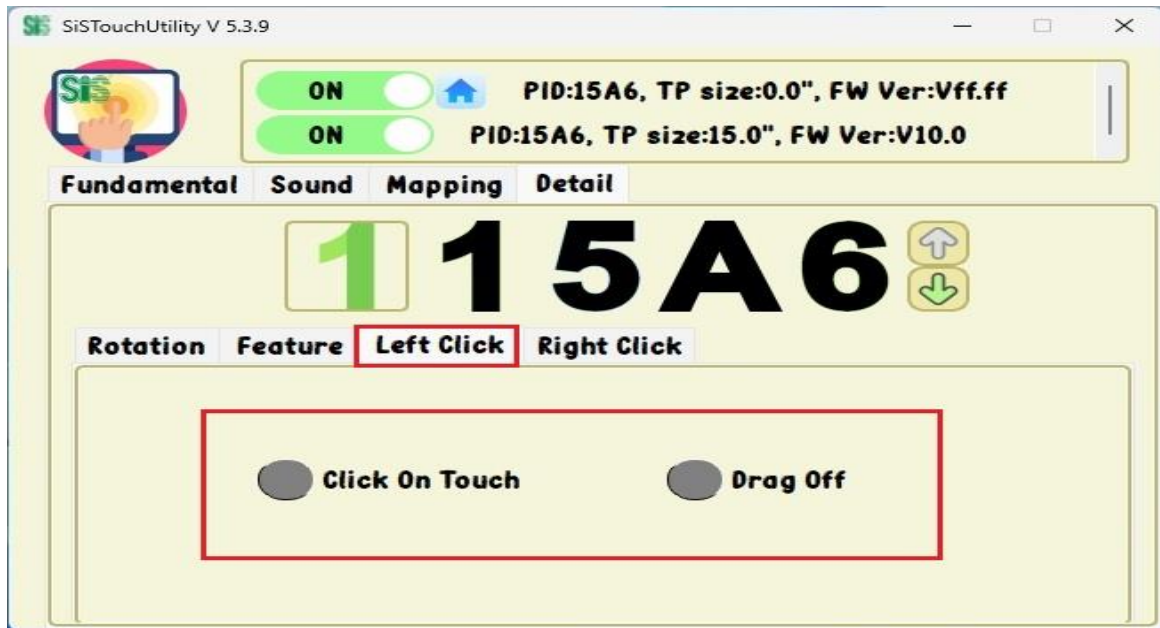
- Palm Reject Range: Sets the size of the area for palm or finger rejection during incorrect touch operations to prevent false touches.
- Palm Reject Threshold: Sets the sensitivity for triggering the Palm Rejection feature. A higher value makes it less likely to trigger Palm Rejection.
- Max Touch Number: Sets the maximum number of touch points allowed simultaneously. This feature is only used when the “Mode” is set to Multi-Touch. Adjusting this value has no effect when set to Mouse or Single-Touch.



(4) “Left Click” : This setting allows the Touch feature to simulate a left mouse button click.

(Note: This setting will only be functional when the touch screen is configured as a Mouse.)

- Click On Touch: Enables the mouse click function.
- Drag Off: Disables the touch drawing feature.



(5) "Mouse Right Click": Configures the touch simulation for Mouse right-click functionality (Note: This setting only functions when "Mode" is set to Mouse).

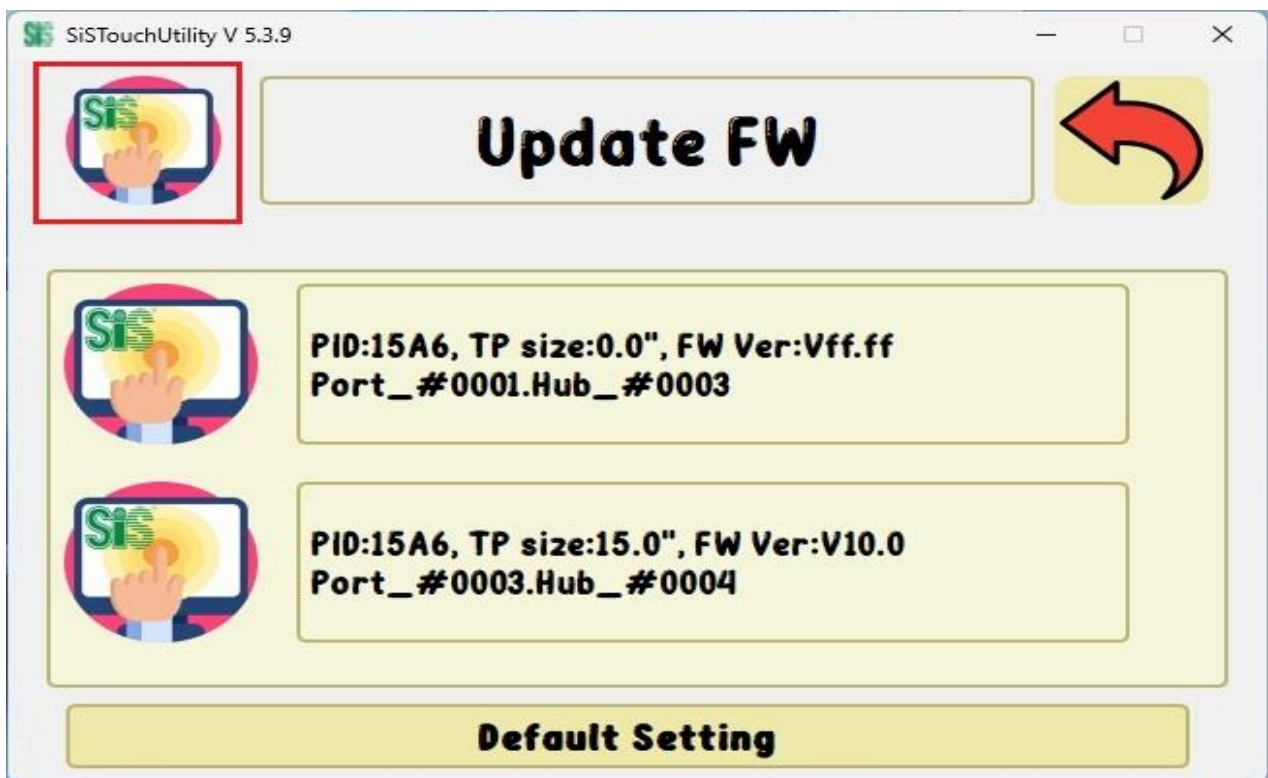
- Click on Touch: Simulates Mouse right-click on touch.
- Click on Release: Simulates Mouse right-click on release.
- Disable Right Click: Disables the Mouse right-click simulation.



- Area: Sets the size of the finger press area to trigger the Mouse right-click simulation.
- Delay: Sets the duration of the finger press to trigger the Mouse right-click simulation.

FW Update Functionality

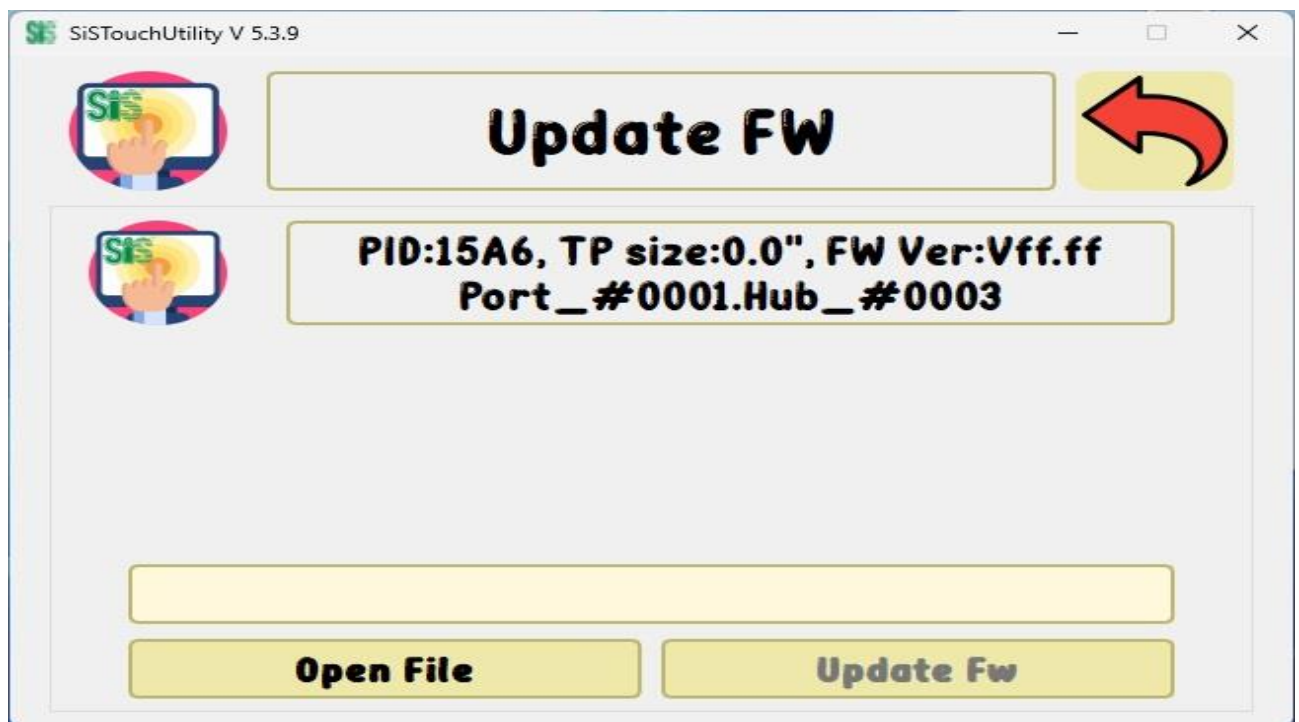
- (1) Click the icon in the upper left corner five times in succession to open the FW Update function window.



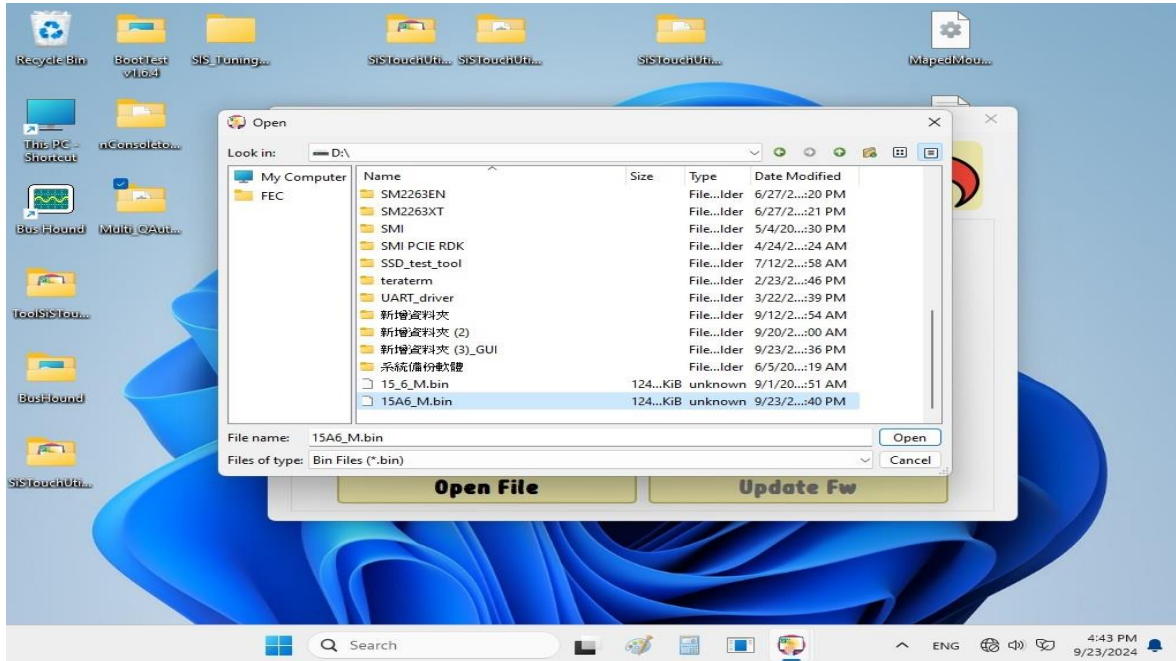
- (2) "Default Setting": Restore all settings to the initial configuration.



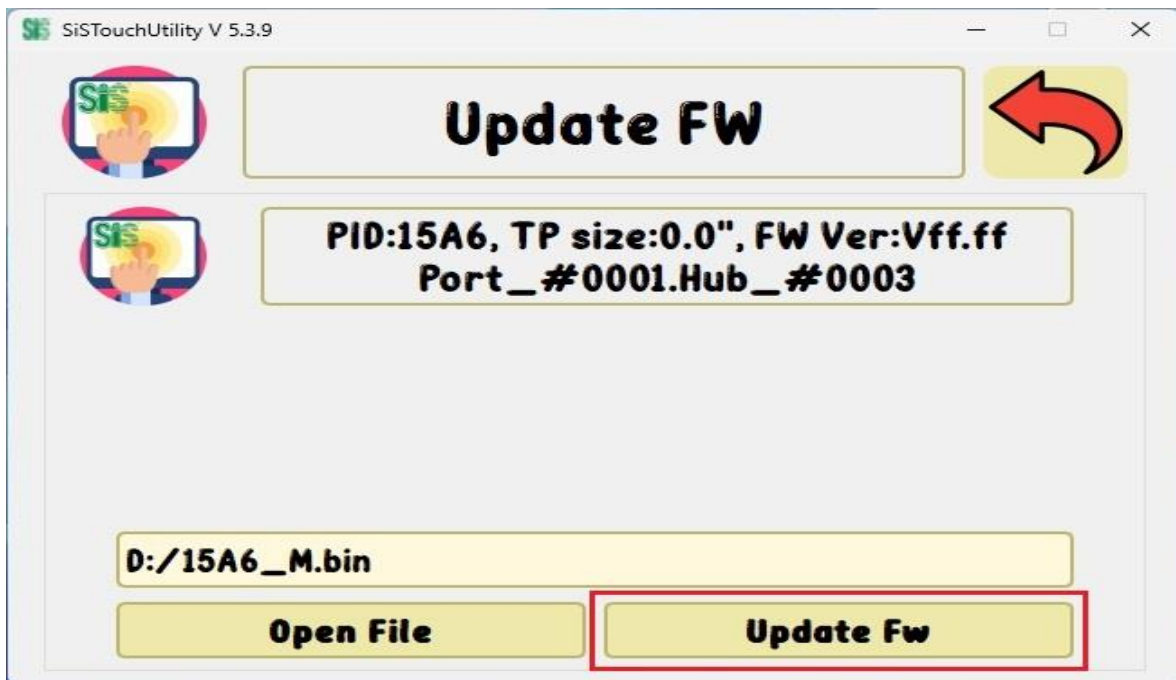
- (3) Double-click on the device that needs the FW update to enter the FW update screen.



- (4) Click "Open File" to open the folder, then select the path of the FW file (*.bin) that you want to update.



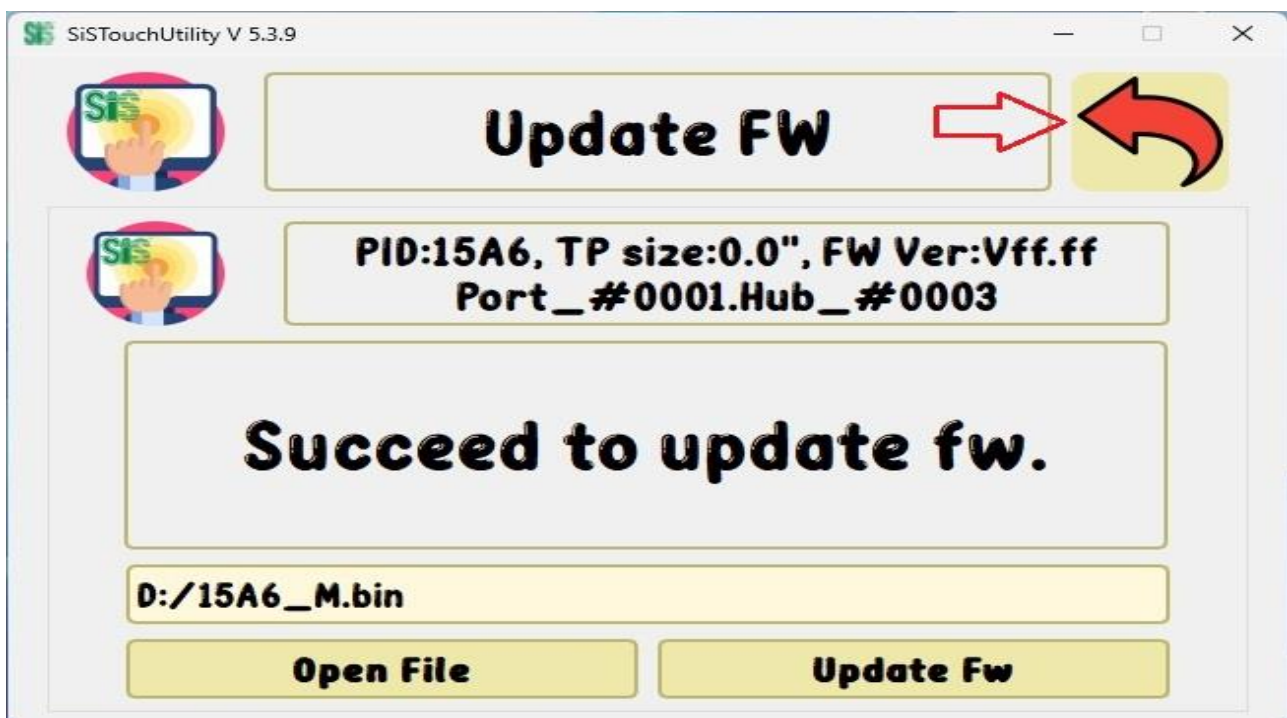
- (5) After clicking the "Update FW" icon, the FW update process will begin.

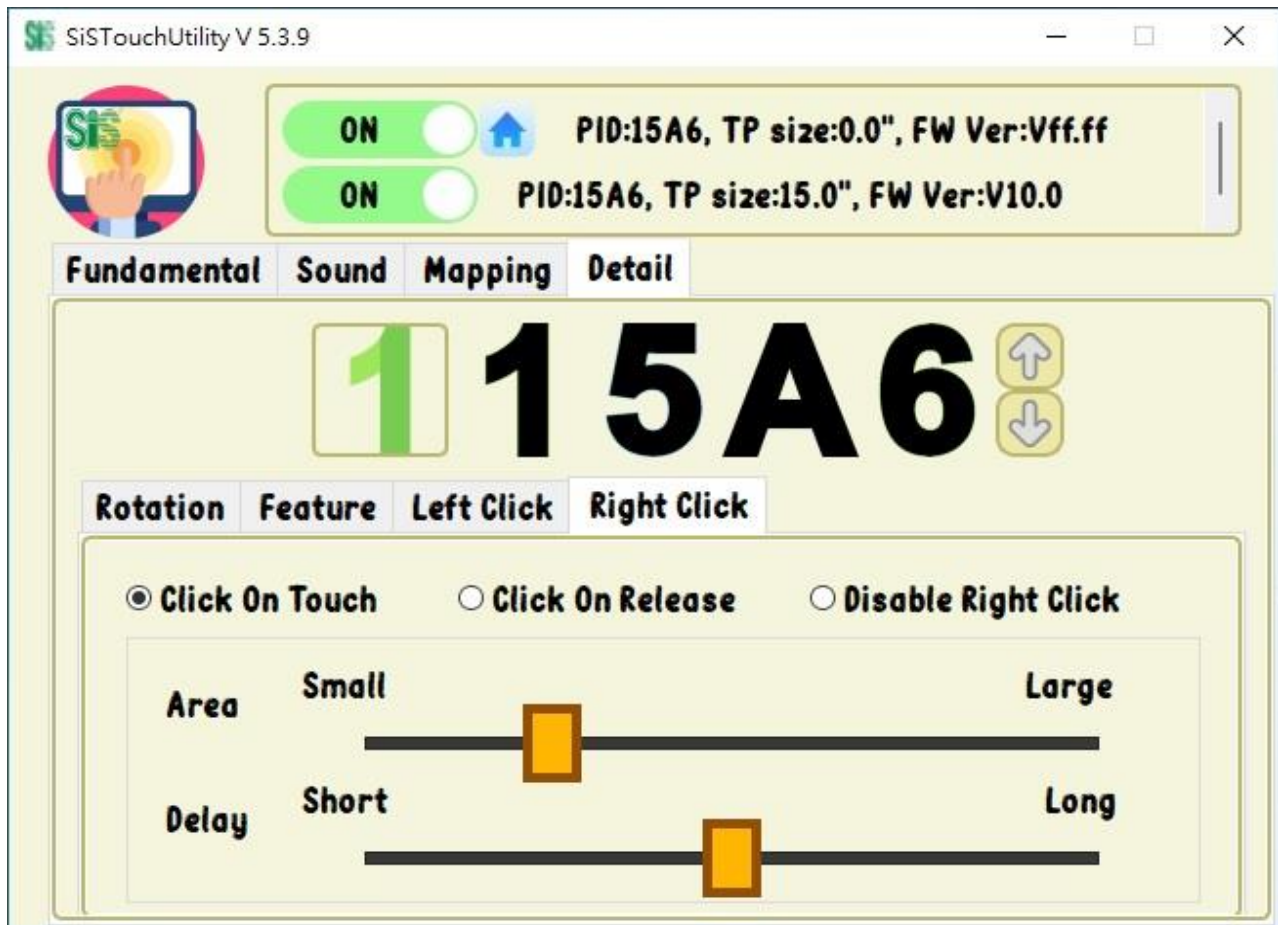


(6) Please do not touch the screen during the FW update process.





(7) After the FW update is complete, please press the back icon to return to the utility main screen.





Legal Disclaimer

Information in this document is provided for the evaluation of the potential business between Silicon Integrated Systems Corp. and you or other purposes agreed by Silicon Integrated Systems Corp. No license, express or implied, by estoppel or otherwise, to any rights or interests, including but not limited to intellectual property rights, is granted by this document.

SiS, , , HyperStreaming, Mirage, MuTIOL, 妙渠, Xabre, HyperZip, SiSHyperZip Connect, PepLink, Glamo, CubicLook and MotionFixing are trademarks or registered trademarks of Silicon Integrated Systems Corp.

Other names and brands may be claimed as the property of others.

Copyright © (2023), Silicon Integrated Systems Corp. All rights reserved.